

V O L . 1 F E B 2 0 2 5

G A B R I E L S E N A C A D E M Y Z I N E



Content

Content.....	2
Introduction.....	3
January 2024: A Journey of Spiritual Depth and Energetic Flow.....	4
April 2024: Flow, Renewal, and Abundance.....	11
May 2024: Strength, Manifestation, and Connection.....	15
June 2024: Clarity, Reflection, and Divine Alignment.....	18
July 2024: Healing, Manifestation, and Higher Guidance.....	21
August 2024: Transformation, Renewal, and Divine Guidance.....	24
September 2024: Cosmic Flow, Luck, and Inner Wisdom.....	26
October 2024: Balance, Renewal, and Spiritual Expansion.....	30
November 2024: Ancestral Healing, Renewal, and Prophecy.....	33
December 2024: Reflection, Renewal, and Inner Balance.....	35
Looking Back, Moving Forward.....	37
List Monthly Energy Systems - 2024.....	39

Introduction

Welcome to the First Volume of Gabrielsen Academy Zine!

As we step into a new year, I am excited to introduce the very first volume of Gabrielsen Academy Zine. This publication is a space where we reflect on the energy systems and techniques introduced throughout the year, weaving together their themes and connections. Whether you have been working with these systems for years or are just beginning your journey, I hope this collection serves as a source of inspiration, exploration, and growth.

This magazine is an evolving project—whether it will become a monthly, bi-monthly, quarterly, or yearly release remains to be seen. For now, it stands as a snapshot of 2024's releases, a way to track the unfolding journey of energetic work and self-discovery. Each month's article explores the techniques and systems introduced during that period as part of a larger flow of transformation, healing, and spiritual expansion.

Thank you for joining me in this first edition. However you engage with this magazine—whether you read it cover to cover or find yourself drawn to specific sections—I hope it brings insight and encouragement to your journey. Let's see where this path takes us.

Ole Gabrielsen
Editor, Gabrielsen Academy Zine

gabrielsenacademy.com

January 2024: A Journey of Spiritual Depth and Energetic Flow



January set the tone for the year, introducing energies that bridged inner transformation with external expansion. The month's releases formed a natural progression, moving from the golden radiance of higher consciousness into deep personal awareness and finally into the breath of life itself. These energies worked together to strengthen spiritual presence, encourage personal insight, and cultivate a sense of natural rhythm within the body and mind.

Gold Reiki Ultimate marked the beginning, a system that carried the essence of pure golden energy,

working with the frequencies of divine light. Gold has long been associated with refinement, clarity, and enlightenment, symbolizing an energy that is both protective and expansive. This system focused on raising vibrations, helping practitioners attune to a higher state of being while maintaining a grounded and steady presence. Unlike some energies that push toward rapid transformation, Gold Reiki Ultimate moved with a stabilizing force, allowing shifts to take place at a natural pace. It acted as a guide, supporting those seeking to deepen their spiritual connection while reinforcing a sense of inner confidence. The energy worked on multiple levels, addressing not just the physical body but also the emotional and mental layers, ensuring a well-rounded and balanced approach to healing and transformation.

Consciousness Reiki Platinum followed, offering a pathway toward expanded awareness and inner clarity. While Gold Reiki Ultimate carried the light of higher frequencies, Consciousness Reiki Platinum worked in a more introspective manner, guiding practitioners toward understanding their own thought patterns and energetic imprints. The mind often acts as both a gateway and a barrier to spiritual progress, shaping perceptions of reality and influencing the way energy flows through the body. This system encouraged deep awareness, helping to clear limiting

beliefs and redirect thought patterns toward alignment with one's higher purpose. It supported emotional balance, allowing practitioners to observe their thoughts without becoming overwhelmed by them. The energy worked in harmony with personal intention, creating a space where deeper insights could arise naturally, without force or resistance.



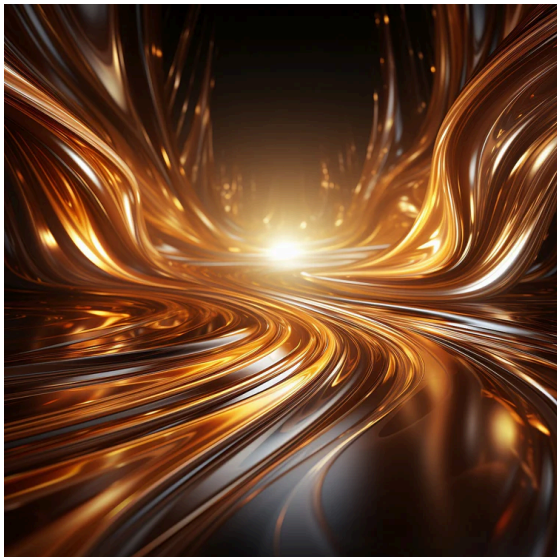
As the month progressed, the rhythm of breath took center stage with the Waterfall Breath Technique. This system brought attention to one of the most fundamental aspects of life—the breath itself. Breath carries energy, acting as the bridge between the physical body and the subtle energetic layers. Waterfall Breath Technique introduced a dynamic approach to breathwork, helping practitioners attune to their own internal rhythm while enhancing vitality and circulation. The method worked by allowing energy to flow like a waterfall, moving through the body in a continuous cycle of renewal. The visualization aspect of the technique added another dimension, encouraging practitioners to experience breath not

just as an unconscious process but as a tool for deep energetic cleansing and renewal. The steady, flowing nature of this practice aligned with the natural movements of energy in the body, creating a sense of ease and fluidity.

Together, these three systems created a strong foundation for the year ahead. Gold Reiki Ultimate set the stage with its high-frequency energy, reinforcing spiritual presence and protection. Consciousness Reiki Platinum encouraged deeper introspection, offering insights into the mind's role in shaping energetic reality. Waterfall Breath Technique grounded these energies, linking breath with movement and allowing for a tangible sense of flow within the body. The combination of these techniques provided a balanced experience, ensuring that both expansion and integration were addressed.

January carried a sense of purposeful momentum. The energies introduced this month did not rush forward with intensity but instead created a steady and supportive foundation for the unfolding year. Gold Reiki Ultimate brought illumination and protection, Consciousness Reiki Platinum refined awareness and thought patterns, and Waterfall Breath Technique encouraged deep energetic flow and renewal. It was a month of establishing spiritual clarity, reconnecting with the body's natural rhythms, and setting the stage for deeper transformations in the months to come.

February 2024: Refinement, Transformation, and Healing



February carried an energy of refinement, strength, and deep transformation. The systems released this month moved through layers of healing, renewal, and energetic balance, offering a structured yet fluid approach to personal and spiritual growth. Each one played a role in helping practitioners reconnect with their inner strength while working through blockages that may have been holding them back. The combination of energies encouraged a process of clearing, realigning, and stepping into a space of clarity and empowerment.

Golden Transformation & Healing Platinum opened the month with a strong yet stabilizing energy. This system worked with golden

frequencies, helping to refine energy patterns while providing a sense of deep healing. Gold has long been associated with strength, wisdom, and resilience, acting as a force of purification and refinement. The energy of this system was not about fast changes but about gradual transformation, much like metal being refined over time. It allowed practitioners to work through areas of energetic stagnation while maintaining balance, ensuring that the shifts taking place were both supportive and sustainable. This technique was particularly helpful for clearing away outdated energetic imprints, making space for new perspectives and possibilities to emerge. The steady presence of this energy provided reassurance that transformation does not have to be chaotic—it can unfold in a way that feels natural and aligned.

Shiva's Oneness Technique followed, bringing a force of deep transformation and alignment. Shiva has long been associated with cycles of destruction and creation, clearing away what no longer serves in order to make way for something new. This system worked through a process of dissolution, allowing old attachments, limiting patterns, and unnecessary energetic weight to be released. Rather than forcing change, the energy of this system encouraged natural realignment, allowing practitioners to let go without resistance. It carried a sense of balance, reminding those who worked with it that transformation does not mean loss but instead

creates an opportunity for something greater to emerge. The energy of Shiva's Oneness Technique worked in harmony with personal awareness, allowing for a deepened sense of clarity and direction.



As the month progressed, the focus shifted toward renewal with the Rainbow Water Spa System. This system introduced an element of purification and restoration, much like stepping into a healing spring. Water has long been recognized as a cleansing force, able to wash away energetic residue and refresh both the body and the mind. This technique worked with rainbow frequencies, ensuring that all aspects of the energetic body were addressed and brought into alignment. The process was one of softening, releasing, and allowing energy to reset naturally. The gentle yet effective nature of this system made it especially valuable for moments when the energy field needed a reset without overwhelming shifts. It carried a sense of peace,

helping practitioners reconnect with a state of balance and ease.

The combination of these three systems created a progression that moved from deep transformation to renewal and alignment. Golden Transformation & Healing Platinum provided a foundation of strength and refinement, helping to clear outdated energy while reinforcing stability. Shiva's Oneness Technique facilitated release, encouraging practitioners to let go of what no longer served them. The Rainbow Water Spa System offered a space for healing and restoration, ensuring that the process of transformation was completed with a sense of ease and renewal.

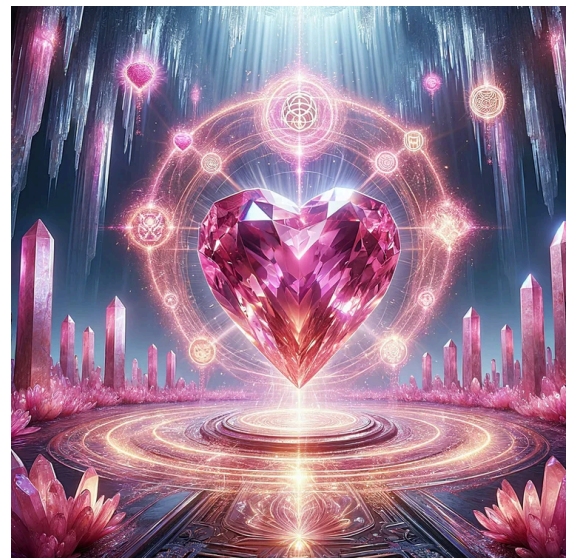
February's energy was steady yet profound, allowing for deep shifts while maintaining a sense of balance. The systems introduced this month supported practitioners in working through transformation in a way that felt aligned with their own natural rhythms. The emphasis was not on rapid change but on sustainable growth, ensuring that the energy being worked with could be fully integrated. The month carried a theme of refinement, making space for clarity, healing, and new possibilities to emerge.

March 2024: Awakening, Protection, and Rebirth



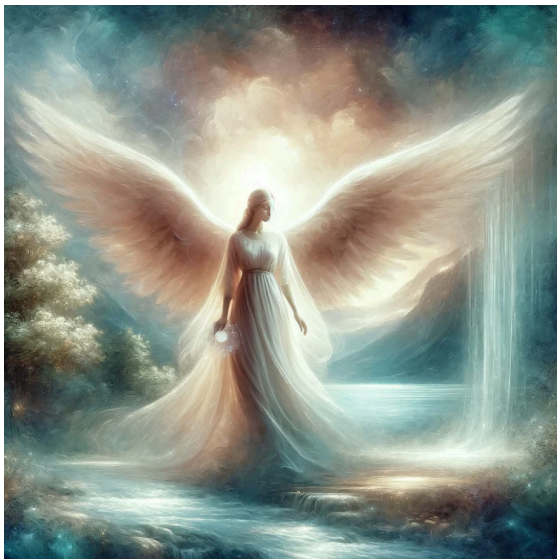
March carried an energy of deep transformation, blending intuition, emotional healing, and spiritual renewal. The systems introduced this month worked together to awaken inner wisdom, reinforce energetic protection, and create space for personal rebirth. The flow of energy moved through different layers of awareness, starting with insight and intuition, shifting into the heart space, strengthening spiritual protection, and finally embracing renewal and transformation. This month encouraged both stillness and movement, reminding practitioners that growth happens in cycles, and each stage of the journey plays a role in shaping the next.

Azurite Reiki Platinum opened the month with a focus on intuition and mental clarity. Azurite has long been associated with deep perception, often called the Stone of Heaven, as it works with the third eye and higher awareness. This system encouraged practitioners to sharpen their insight, helping them access new levels of understanding and inner knowing. The mind often filters reality through patterns of past experiences and expectations, making it difficult to see things as they truly are. Azurite Reiki Platinum worked to clear mental fog, creating space for clear thought and new perspectives. It was an energy of quiet observation, allowing deeper insights to emerge without force. The presence of this system supported those seeking to strengthen their intuitive abilities while maintaining a sense of stability and focus.



Morganite Reiki Platinum followed, shifting the energy toward the heart. Where Azurite Reiki Platinum worked with mental clarity and awareness,

Morganite Reiki Platinum brought in emotional healing and the frequency of divine love. Morganite carries a soft but powerful vibration, helping to dissolve barriers to self-acceptance and allowing love to flow more freely. Love, in this context, was not just about relationships but also about the way practitioners engaged with themselves and the world around them. This system worked gently, encouraging a deeper connection to self-worth and the ability to receive love without hesitation or resistance. Emotional balance played a key role in this energy, reinforcing the idea that love is not just something external to be found but something already present within.



As intuition and love expanded, protection became the next focus. Guardian Angel Reiki introduced a stabilizing energy, creating a sense of safety and support. The presence of guardian angels is often described as a quiet but unwavering force, always present yet subtle in its influence. This

system worked to strengthen that connection, helping practitioners feel guided and supported in their spiritual work. Protection was not just about shielding from external influences but also about maintaining a sense of inner balance and trust. The energy of this system acted as a gentle reminder that guidance and protection are always available, reinforcing the idea that spiritual growth is not something that must be faced alone.

With stability in place, the next natural step was renewal. The Spring Rebirth Technique aligned with the season's energy, encouraging a process of cleansing and awakening. Just as nature moves through cycles of dormancy and bloom, this system worked to clear energetic stagnation and bring fresh energy into the body and mind. The technique worked by activating energy centers like blooming flowers, gradually opening and expanding in a way that felt natural and aligned. Growth is not always about dramatic change; sometimes, it is about allowing things to unfold in their own time. The presence of this energy supported practitioners in embracing their own rhythms, making space for new beginnings without forcing the process.



The month concluded with Phoenix Reiki, a system that carried the essence of deep and lasting transformation. The phoenix has long been a symbol of rebirth, rising from its own ashes to begin again. This system embodied that energy, working to clear away what no longer served and replace it with renewed vitality. Unlike the gentle renewal of Spring Rebirth Technique, Phoenix Reiki carried a more intense energy, pushing for release and regeneration. It worked through both the physical and energetic body, burning away old imprints and allowing for a fresh start. This energy was not about small adjustments but about full transformation, ensuring that what remained was aligned with the highest potential.

March carried a strong theme of awakening and renewal. Azurite Reiki Platinum opened the mind to deeper insight, Morganite Reiki Platinum softened the heart, Guardian Angel Reiki provided spiritual protection,

Spring Rebirth Technique encouraged renewal, and Phoenix Reiki completed the transformation. The month moved through different stages of awareness, ensuring that both emotional and spiritual aspects were addressed. The journey was one of clarity, love, strength, and rebirth, creating a space where practitioners could move forward with a sense of purpose and alignment.

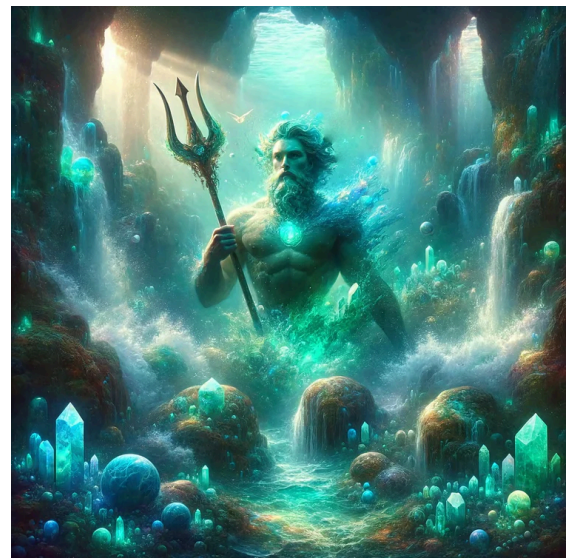
April 2024: Flow, Renewal, and Abundance



April carried an energy of balance, transformation, and abundance. The systems introduced this month moved between love, nature, purification, and prosperity, creating a cycle of deep renewal and alignment. Each one played a role in guiding energy, encouraging clarity, and strengthening the connection to both inner and outer abundance. The flow of the month unfolded in a natural rhythm, beginning with love and connection, shifting into emotional healing, moving through empowerment, and concluding with a sense of fulfillment and beauty.

The month began with Soulmate Reiki, a system focused on deepening connections and clearing emotional barriers to love. Soulmate energy does not only refer to romantic relationships but extends to friendships, family

bonds, and even the relationship with oneself. This system worked by dissolving past patterns that may have created resistance to meaningful connections. Love, in all its forms, is something that flows best when received and given without fear. By working with this energy, practitioners could strengthen existing relationships, attract new meaningful connections, and cultivate a deeper sense of self-acceptance. The essence of this system encouraged openness, helping to remove any blockages that stood in the way of love and connection.



Following this, Ocean Wave Reiki introduced an energy of fluidity and emotional clarity. Water has long been associated with healing, reflection, and deep transformation. This system worked like the rhythmic movement of ocean waves, allowing emotions to be processed in a natural and non-restrictive way. Just as the ocean does not resist its tides, this energy encouraged a sense of flow, helping

practitioners move through emotions with ease rather than becoming stuck in them. The gentle yet powerful nature of this system made it an ideal tool for emotional balance, allowing practitioners to embrace the constant shifts of life without resistance.



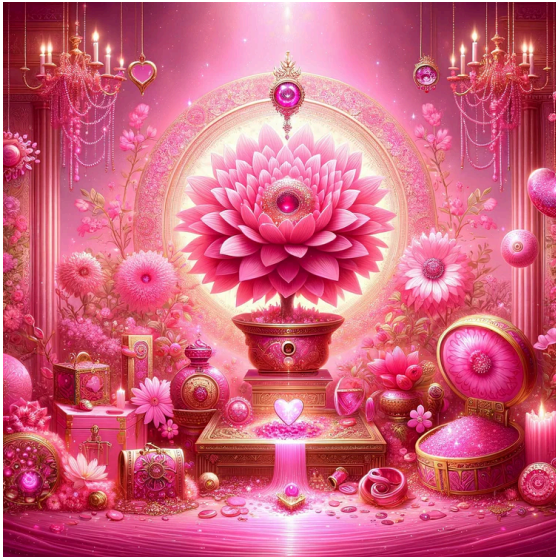
Thunder Wheel Technique followed, bringing a force of strength and empowerment. This system worked with rotating energy, clearing out negativity and replacing it with renewed vitality. Unlike the softness of the previous systems, this technique carried a more intense energy, working specifically with the solar plexus chakra to clear blockages related to personal power. It was an energy of movement and action, ensuring that any stagnant patterns were addressed and released. The process of clearing energy allowed for new possibilities to emerge, reinforcing confidence and a sense of direction.

As emotional clarity and empowerment were strengthened, Spring Flowers Technique encouraged

a state of gentle renewal. Inspired by the cycles of nature, this system worked by activating the chakras in sequence, much like the process of flowers blooming in spring. The energy carried an essence of patience and natural progression, reminding practitioners that growth does not need to be rushed. By aligning with the rhythms of the earth, this system encouraged personal expansion in a way that felt balanced and organic.



Pink Rhapsody Technique introduced a bright and uplifting frequency, focusing on joy, creativity, and emotional expansion. Energy moves in waves, and after periods of introspection and healing, there is a need for lightness and expression. This system worked by increasing vitality and clearing away emotional heaviness, making space for spontaneity and inspiration. Pink energy has long been associated with playfulness and heart-centered expansion, making this system a tool for reconnecting with the things that bring happiness and fulfillment.

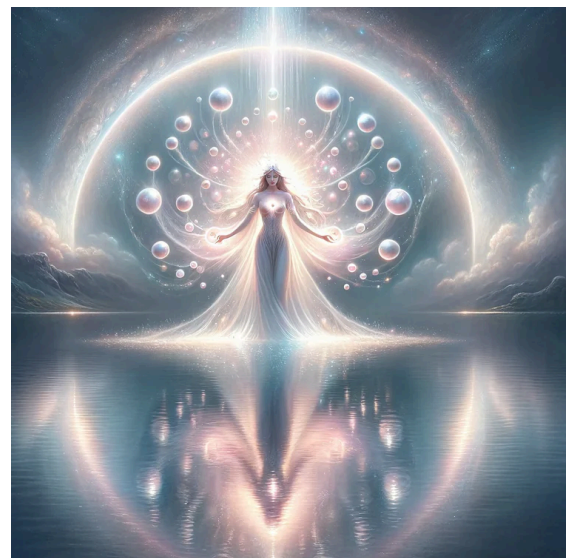


Abundance became the next focus with Pink Abundance from Abundantia. Abundance is often associated with material wealth, but its energy extends into many aspects of life, including love, joy, and opportunities. This system worked with the energy of Goddess Abundantia, encouraging practitioners to align with prosperity in all its forms. The energy of this system reminded practitioners that abundance flows best when received with gratitude and shared freely. By working with this system, the focus shifted toward recognizing the abundance already present while remaining open to new opportunities.

Turquoise Rain Technique brought a sense of purification, allowing for a final clearing before settling into harmony. This system worked like a gentle rain, washing away lingering stress and restoring a sense of calm. Water has always been a symbol of renewal, and this energy carried that essence, allowing the energetic body to reset and refresh. The presence of

turquoise energy added an element of communication and expression, supporting the ability to speak and act with clarity. This system acted as a transition point, ensuring that all previous work could settle naturally.

The month concluded with Velvet Pearls Technique, an energy of refinement, beauty, and self-care. This system worked with both inner and outer beauty, encouraging a state of relaxation and appreciation. Beauty is often perceived externally, but true radiance comes from balance and harmony. This system reinforced that concept, allowing practitioners to feel at ease within themselves while enhancing their sense of well-being. It was a reminder that self-care is not a luxury but an essential part of maintaining alignment and peace.



April carried an energy of movement, growth, and renewal. Soulmate Reiki opened the heart to love and connection, Ocean Wave Reiki encouraged emotional balance, and Thunder Wheel Technique introduced

empowerment. Spring Flowers Technique aligned with natural cycles of growth, while Pink Rhapsody Technique brought joy and vitality. Pink Abundance from Abundantia reinforced the flow of prosperity, Turquoise Rain Technique provided cleansing and clarity, and Velvet Pearls Technique concluded the month with beauty and relaxation. The systems worked together to create a path of expansion, ensuring that both transformation and harmony were present.

May 2024: Strength, Manifestation, and Connection



As spring deepened, May brought an energy of action, renewal, and connection. The systems released this month covered a wide range of experiences, from personal protection and manifestation to deep connections with nature and ancient wisdom. Some worked with focused intent, helping to amplify desires into reality, while others nurtured a sense of balance and harmony.

Each system introduced this month flowed naturally into the next, creating a journey of strength, transformation, and alignment.

Cloud Rings Technique provided energetic protection, shielding personal space and strengthening

boundaries. Red Booster Technique introduced a powerful force for manifestation and vitality. Ethereal Pink Water Lily Technique worked on emotional relaxation and self-love. Nordic Flame Technique encouraged the fire of inspiration and personal power. 8 Norse Gods & Goddesses Platinum connected practitioners to the wisdom and energy of ancient deities. Nature Reiki Platinum infused healing through the power of the earth. Emerald Reiki Platinum brought emotional renewal, while Magenta Laser Technique acted as a high-frequency energy booster. The month concluded with Green Reiki Platinum, providing deep healing and alignment with the heart's wisdom.

Cloud Rings Technique was the perfect way to start the month. Acting as an ethereal protective barrier, it created a ring of energy around the body, guarding against negativity while also radiating a purifying frequency. It wasn't just a shield—it worked both inwardly and outwardly, helping to clear low vibrations from within while maintaining a sense of clarity and stability in daily life. Some who used it described feeling an increased awareness of their personal space and a stronger ability to maintain energetic boundaries.

With protection in place, energy could then be focused outward toward manifestation and action.

Red Booster Technique embodied movement and determination. Working with the dynamic energy of Mars, it

acted as a forceful push in the direction of one's goals. This was a system of fast, direct energy, meant to amplify focus and motivation. Practitioners used it to direct energy toward life missions, projects, and personal healing. It was a reminder that manifestation is not only about setting intentions but also about taking action.

Yet, action alone is not enough—balance is needed. Ethereal Pink Water Lily Technique offered a soft counterbalance, working as a gentle and deeply nurturing energy. This technique encouraged self-love, relaxation, and inner peace. The pink water lily, often associated with emotional healing, symbolized beauty, serenity, and the power of stillness. This system wasn't about striving or pushing—it was about allowing love and care to flow naturally. Some described it as an "ethereal spa," a space to recharge and return to a sense of harmony.



After stillness, fire. Nordic Flame Technique ignited the inner spark of transformation and resilience. Inspired by the energy of the Norse lands, this technique awakened the lower chakras, bringing a fiery warmth that encouraged action, creativity, and courage. It was a reminder that while peace is necessary, so is boldness and the willingness to step into personal power. The Web of Wyrð, an ancient Norse symbol, played a role in this system, acting as a tool for manifestation and protection.

Nordic energy continued to be a strong presence this month with 8 Norse Gods & Goddesses Platinum. This system connected practitioners to the wisdom, guidance, and protection of the Norse deities. Odin brought wisdom, Thor offered strength, Freyr guided prosperity, and Tyr instilled discipline. Each deity carried a unique energy, making this a deeply versatile system. It was an opportunity to learn from the past, integrating the ancient knowledge of the Norse traditions into modern life.

With the fire of transformation and the wisdom of the past in place, it was time to return to nature for renewal and grounding.

Nature Reiki Platinum reconnected practitioners to the healing energy of the earth. This system was a reminder that nature is not just a place—it is a living force, always offering guidance, balance, and nourishment. Trees, rivers, mountains, and the sky all hold energy that can restore the mind and

body. Some used this system to deepen their connection to nature, while others found it helpful in physical healing, working to align their energy with the natural rhythms of the world.



Emerald Reiki Platinum followed, working with the heart chakra and emotional healing. Emerald has long been considered a stone of renewal, offering clarity, patience, and deep emotional balance. This system worked to restore harmony, releasing stagnant emotional energy and opening the heart to new possibilities. Some practitioners found that it helped in relationships, not only with others but with themselves. It wasn't about seeking outside validation—it was about finding inner peace and self-acceptance.

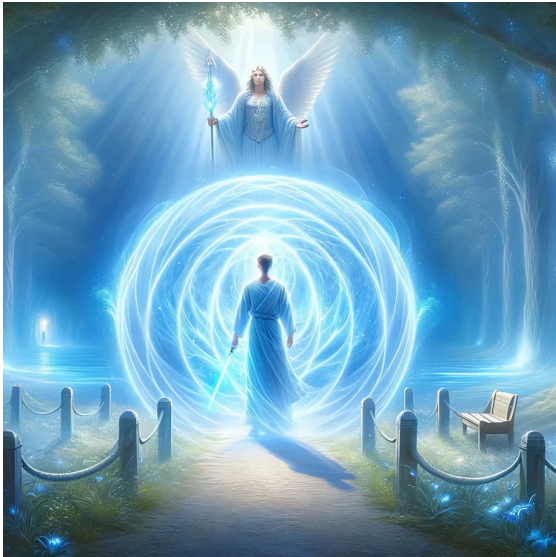
As the month neared its end, Magenta Laser Technique provided a final surge of energy. This was a high-frequency system, acting as an accelerator for kundalini activation, manifestation, and deep transformation. The energy was fast-moving and intense, making it

useful for moments when quick shifts and breakthroughs were needed. Some found that it worked well in combination with other techniques, helping to amplify their effects.

The month closed with Green Reiki Platinum, an energy deeply connected to healing and divine guidance. Working with Archangel Raphael, this system focused on physical, emotional, and spiritual renewal. Green is often associated with the heart chakra, but in this case, it extended further, offering a sense of deep wholeness and well-being. It was a fitting way to conclude a month of transformation—bringing all of the energy together into a state of balance and peace.

May was a lesson in contrast. It moved between fire and water, action and stillness, strength and softness. It carried the wisdom of the past, the power of the present, and the renewal of nature itself.

June 2024: Clarity, Reflection, and Divine Alignment



June carried a sense of refinement and purpose. While earlier months had introduced energies of transformation, release, and renewal, June took these foundations and built something deeper. The systems introduced this month worked together to expand clarity, bring ancient knowledge into the present, and align life with divine wisdom. Each technique felt like a step upward, offering a view from above, like standing on a mountain and seeing the path that had been walked. It was a month of recognizing progress and stepping forward with confidence.

The month began with Royal Blue Success Technique, an energy of protection and spiritual alignment. Success was not just about material achievements but about moving through life in a way that was blessed,

supported, and guided by divine forces. The technique carried the energy of Archangel Michael, creating a shield against negativity while ensuring that actions were aligned with the highest good. Practitioners who worked with it found themselves gaining a deeper understanding of what success truly meant. For some, it was about career growth. For others, it was about peace, fulfillment, and the ability to move forward with confidence. It wasn't about chasing outcomes but about trusting that every step taken was guided and protected.

Ancient Wisdom Technique followed, grounding this sense of success with ancestral knowledge. The modern world often moves fast, encouraging people to think ahead, plan for the future, and constantly look forward. But wisdom doesn't always come from moving faster—it often comes from looking back. This system acted as a bridge between past and present, reminding practitioners that the wisdom of generations is carried within. Sitting by a tree, connecting with the energy of the earth, this technique encouraged stillness. It wasn't about seeking new knowledge but about remembering what was already known. The experience was one of deep peace, a moment to feel connected not only to personal ancestry but to the broader wisdom of humanity.

With wisdom and success aligned, it was time for reflection. Spiritual Journal Platinum encouraged deep

introspection, creating a sacred space for thoughts, experiences, and insights. Guided by Archangel Michael, this was no ordinary journal—it was a place where spiritual experiences could be recorded and protected. Some found that writing in the journal clarified their thoughts, helping them see patterns and recognize moments of growth. Others used it as a tool for manifestation, setting intentions and tracking their journey. The act of writing became a ritual, a way to bring inner experiences into tangible form.



Midway through the month, two essences were introduced, each carrying a distinct vibrational quality. Golden Topaz Essence infused energy with confidence, self-worth, and abundance. It was like a golden ray of sunlight, lifting spirits and strengthening personal power. This energy worked with the solar plexus, reinforcing a deep sense of self-trust. Many found that it helped with communication, making it easier to express thoughts and ideas clearly. It

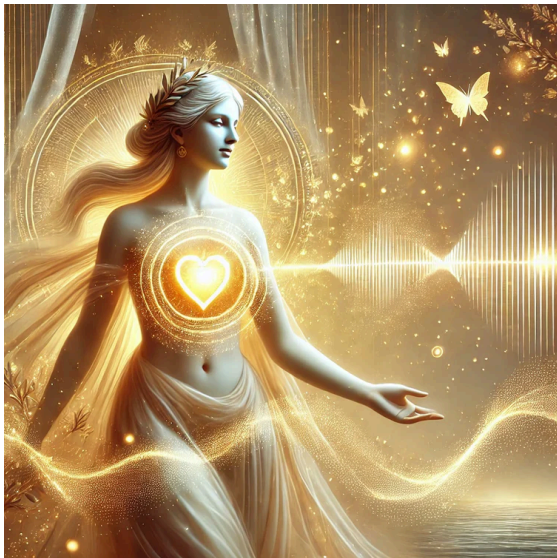
was an energy of leadership, not in a controlling way, but in a way that inspired natural confidence.

Aquamarine Essence, on the other hand, flowed like water. Where golden topaz brought fire and strength, aquamarine introduced peace and emotional balance. It worked with the throat chakra, but in a softer way, allowing thoughts to flow effortlessly rather than pushing them forward. This was an essence of clarity and relaxation, helping practitioners stay present even in moments of stress. Many found it to be a calming force, a way to release tension and restore inner peace.

As the month progressed, the focus shifted to divine serenity. Heaven Cloud Technique introduced a sense of deep, unwavering peace, as though resting on a soft cloud, far removed from the noise of the world. Created with the support of Archangel Michael and Archangel Gabriel, this system encouraged practitioners to step into a state of tranquility. Unlike some energies that worked through intensity, this one worked through surrender. It was about allowing peace to settle in naturally, like a quiet presence that filled every aspect of life.

From this place of peace, love became the next focus. Hearts of Gold Technique, gifted by Goddess Aphrodite, carried the energy of love in its highest form. This was not a system for fleeting romance but for deep, transformative love. Love that changes people, pushes them to grow,

and encourages them to be the best versions of themselves. This system worked for those in relationships, for those healing from past love, and for those preparing for the love yet to come. It was about gratitude for every experience and every connection, understanding that all love—whether joyful or painful—plays a role in shaping the soul.



The final system of the month, Gardens of Life Technique, brought everything together into a state of abundance. This technique, connected to the planet Jupiter, encouraged practitioners to step fully into the life they were meant to live. It worked as a clearing force, dissolving mental blockages and self-imposed limitations. Many who used this system described it as a gateway to possibilities they hadn't considered before. It was not about chasing after dreams but about recognizing that they were already within reach. The metaphor of the garden fit perfectly—life was meant to be a place

of growth, beauty, and abundance. This system reminded practitioners that they were the creators of their own gardens, capable of cultivating anything they desired.

June was a month of refinement, taking all the transformations from previous months and crystallizing them into something clear and intentional. It was a journey through success, wisdom, reflection, confidence, peace, love, and ultimately, abundance. Each system built upon the next, creating a flow that carried practitioners toward greater clarity. By the end of the month, there was a sense of completion, as if the foundation had been set for something even greater to come.

July 2024: Healing, Manifestation, and Higher Guidance



July carried a sense of deep healing and empowerment. The month's releases moved between recovery, love, manifestation, and clarity, leading to a balanced and expansive energy. The systems introduced during this period supported both the physical and spiritual body, encouraging transformation while providing a strong foundation for the months ahead.

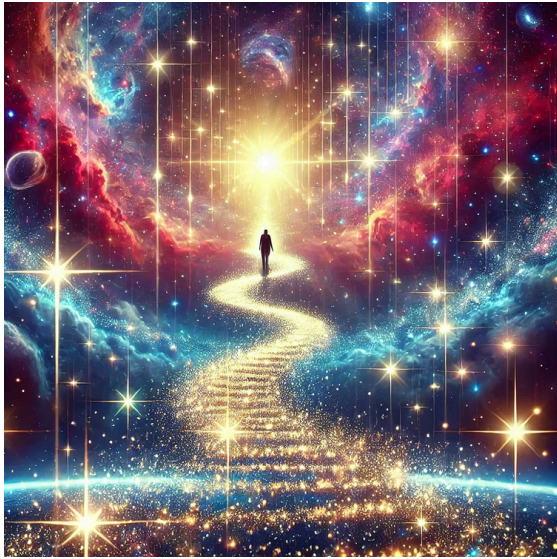
The month began with Recovery Elixir from Archangel Raphael, a system focused on healing and renewal. This technique carried a deeply nurturing energy, working not only on the physical body but also on the emotional and spiritual layers. It was a gentle reminder that healing requires time and space, that true recovery is about more than just fixing what is

broken—it is about regaining strength and finding balance. Some practitioners used it as a meditative tool, allowing its green energy to flow through them like a calming wave. Others infused their drinking water with its energy, making healing part of their daily routine. It was an energy of patience, teaching that recovery is not about rushing but about allowing the body and mind to regenerate at their own pace.

Strawberry Quartz Essence Technique followed, bringing warmth and enthusiasm. This system, a gift from Venus, was not just about love in the romantic sense but about reconnecting with life itself. It reignited passion, dissolving fears and opening the heart to joy. There was something playful about it, something that reminded practitioners of youthful excitement and optimism. It was an energy of possibilities, of stepping into each day with an open heart and a sense of wonder. Some found that it helped them reconnect with forgotten dreams, while others used it as a way to cultivate deeper appreciation for the present moment.

Stardust Path from Mercury Technique took this enthusiasm and directed it toward clarity and momentum. This system worked with the energy of Mercury, the planet of communication and movement, helping practitioners find their path with greater ease. There was a swiftness to it, a sense of being guided toward the right opportunities at the right time. It was particularly

useful for those seeking direction in their careers or personal projects, offering insight and inspiration. Many who worked with this energy described feeling lighter, more fluid in their decision-making, as if the obstacles in their way had become stepping stones rather than barriers.



With this clarity in place, Galaxy Vortex of Manifestation from Master Abundantia expanded the energy of abundance. This system worked on the principle of a vortex, pulling cosmic energy through the chakra system and grounding it into the physical world. Unlike traditional manifestation techniques that focused on external results, this one worked from the inside out, strengthening self-confidence and inner stability. It was about recognizing that abundance begins with a mindset, that confidence and gratitude are the foundation of a prosperous life. Those who worked with this system often found themselves feeling more aligned with

their desires, more open to receiving what they truly needed.

Midway through the month, the focus shifted toward emotional and energetic refinement. Kunzite Essence brought a wave of peace and emotional balance, encouraging deep relaxation and inner stability. This energy was gentle yet powerful, dissolving tension and creating a sense of openness. It worked particularly well for those seeking to release past wounds, allowing them to move forward with a clear heart. Some used it as a meditation aid, while others found it helpful in navigating difficult conversations or relationships. It was a reminder that true strength comes from emotional clarity, from being able to hold space for both oneself and others.



Business Reiki introduced a more practical energy, aligning personal and professional goals with abundance. This system was not just about financial success but about doing work that was meaningful and

fulfilling. It worked with the energy of Spica, the star of abundance, bringing a sense of alignment to career paths and business ventures. Some found that it helped them recognize new opportunities, while others experienced a shift in mindset, letting go of limiting beliefs around success. It was an energy of possibility, reminding practitioners that prosperity is as much about mindset as it is about external conditions.

Toward the end of the month, Swift Diamond Reiki brought a rapid and focused cleansing energy. This system worked like a refining fire, removing energetic blockages and sharpening intentions. It was fast-moving and effective, making it useful for those who wanted quick, noticeable shifts. Many described feeling lighter after working with it, as if they had shed layers of energetic weight they didn't even realize they were carrying. It was particularly beneficial for those going through transitions, helping them clear away what no longer served them so they could step into new phases of life with confidence.

Lapis Lazuli Essence followed, deepening intuition and inner wisdom. This energy, long associated with the third eye, encouraged practitioners to trust their inner knowing. It was an energy of clarity, helping to cut through mental noise and bring focus to what truly mattered.

Some used it to enhance meditation or dream work, while others found that it helped them communicate with

greater authenticity. It was a system of self-awareness, reminding practitioners that the answers they seek are often already within them.



The month concluded with Swift Celestine Reiki, a technique connected to the angelic realm, particularly Archangel Gabriel. This system encouraged guidance, lightness, and ease, making it a beautiful energy to end on. Unlike some techniques that worked through deep transformation, this one felt effortless, like a gentle lifting of energy. It was about moving through life with grace, trusting that support was always available. Practitioners who worked with it often described feeling a sense of peace, as if they had been reminded that they were never truly alone.

July carried a rhythm of healing, clarity, and higher guidance. It moved from recovery into enthusiasm, from manifestation into wisdom, from refining energy into effortless flow. By the end of the month, there was a sense of alignment, as if everything had clicked into place, preparing for the next steps on the journey.

August 2024: Transformation, Renewal, and Divine Guidance



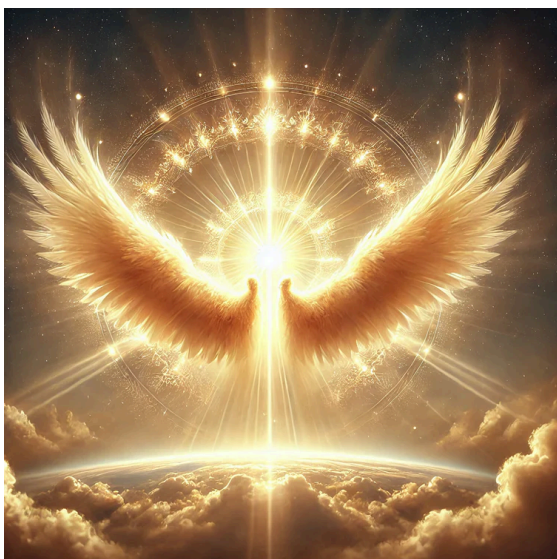
August carried a sense of deep spiritual refinement. The systems introduced this month moved through cycles of opportunity, transformation, and celestial connection, supporting practitioners in both their personal and spiritual growth. Each system seemed to build upon the last, weaving a story of renewal, balance, and divine expansion.

The month began with Green Aventurine Essence, an energy of opportunity and abundance. Known as the "Stone of Opportunity," green aventurine has long been associated with prosperity and success. This system worked as a gentle yet powerful force, guiding practitioners toward new possibilities and opening

doors that may have previously seemed out of reach. It encouraged a mindset of perseverance, reinforcing the belief that abundance is always within reach. Some described its energy as uplifting and motivating, helping them stay committed to their goals while remaining open to unexpected blessings. For those engaged in creative work, it acted as a source of inspiration, allowing new ideas to flow freely and effortlessly. Beyond financial or professional success, this system also worked on a more personal level, bringing a sense of peace and relaxation while clearing away mental fog.

As energy aligned with prosperity, the next step was renewal. Rebirth Reiki introduced a deep transformative energy, inspired by the ancient Egyptian god Anubis. This system was not just about healing but about letting go, shedding the past, and stepping fully into a new version of oneself. The energy carried the essence of the underworld's mysteries, guiding practitioners through an inner journey of rebirth. It worked deeply, moving through old patterns and dissolving emotional attachments that no longer served a purpose. Some experienced a strong pull toward introspection, as if looking into a mirror that revealed all aspects of their growth. Others described feeling lighter, as if they had released years of stagnant energy in a single session. The process was not always immediate, but its effects unfolded over time, allowing gradual yet profound transformation.

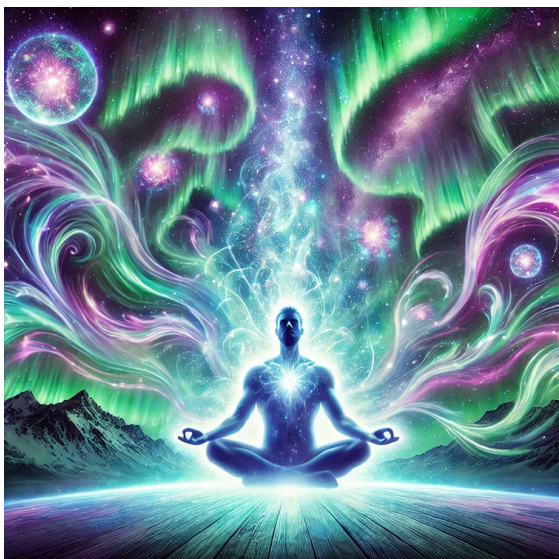
After stepping into this new energy, Copernicus Reiki encouraged practitioners to see life from a new perspective. Named after the astronomer Nicolaus Copernicus, this system symbolized the shift in understanding that comes when looking at things differently. Just as Copernicus revealed that the planets revolve around the Sun rather than the Earth, this energy encouraged practitioners to step outside of their usual perspectives and embrace a more expansive view of reality. It worked with both solar and earthly energies, bringing a sense of grounding while also connecting to cosmic forces. The balance between these energies created a sense of stability, helping practitioners feel centered even in times of change. Some described it as an energy of clarity, making it easier to navigate life with a greater sense of purpose and alignment. Others found that it enhanced their ability to trust in the natural cycles of life, understanding that every phase has its purpose.



The month concluded with Seraphim Reiki, a connection to the highest celestial frequencies. Unlike other angelic energies that focused on guidance and protection, this system carried a sense of divine love and overwhelming light. The Seraphim, known as the highest order of angels, are often described as beings of pure fire, existing in constant praise of the Divine. This system allowed practitioners to experience a fragment of that celestial love, an energy so profound that it felt both overwhelming and deeply reassuring. Some who worked with this energy described it as an all-encompassing presence, a sensation of being fully embraced by divine warmth. Others found that it enhanced their meditation practices, making it easier to enter states of stillness and peace. It was not an energy of action or force but one of surrender, reminding practitioners that sometimes, the most powerful transformation comes from simply allowing themselves to receive.

August carried a theme of deep spiritual refinement. Green Aventurine Essence introduced new opportunities and abundance, Rebirth Reiki guided practitioners through a personal transformation, Copernicus Reiki expanded perspectives, and Seraphim Reiki brought connection to divine love. Together, they formed a cycle of growth, reminding practitioners that transformation is not just about change—it is about embracing each step of the journey with trust and openness.

September 2024: Cosmic Flow, Luck, and Inner Wisdom



September carried an energy of movement and expansion, shifting between the mysteries of the cosmos, the depths of the ocean, and the abundance of the earth. The systems released this month worked together to refine intuition, enhance luck, and align practitioners with the natural rhythms of abundance and wisdom. From the celestial to the earthly, each technique provided a pathway toward clarity, success, and spiritual balance.

Aurora Borealis Reiki set the tone for the month with an energy inspired by the Northern Lights. Much like the ever-shifting waves of color that illuminate the sky, this technique carried a sense of magic, wonder, and deep spiritual connection. The Northern Lights have long been a symbol of divine communication,

appearing unpredictably yet always inspiring awe. This system embodied that same sense of sacred mystery, allowing practitioners to connect with higher frequencies of light and wisdom. Some who worked with this energy described feeling as though they were wrapped in a protective aura, while others experienced heightened intuition and spiritual insight. The energy was fluid and expansive, reminding practitioners that growth is not always linear but a dance between the known and the unknown.



Sodalite Essence followed, reinforcing clarity and personal truth. Known as the stone of communication, sodalite helped activate the throat chakra, ensuring that words, thoughts, and actions were aligned with authenticity. It was a system of confidence and self-expression, making it particularly useful for those seeking to communicate more effectively or strengthen their personal beliefs. Beyond communication, sodalite carried an intellectual energy,

enhancing logic, intuition, and the ability to see things from a broader perspective. Some practitioners found that working with this essence helped them trust their inner voice, while others experienced an increased ability to remain calm and centered in challenging situations.

Mermaid Song Technique introduced an entirely different kind of flow—one that worked with the depths of emotion and intuition. The legends of mermaids have long been tied to the mysteries of the sea, embodying both allure and the unknown. This system captured that essence, allowing practitioners to connect with the fluidity of their emotions while also encouraging the release of deep-seated fears. Water has always been associated with healing, transformation, and the subconscious mind, and this technique encouraged practitioners to move with, rather than resist, the currents of life. Some described feeling more at peace with their emotions, while others found that the system helped unlock creative and intuitive abilities they had previously ignored. It was an energy of trust—trusting one's own depths and the wisdom hidden beneath the surface.

Abundance Alignment Technique introduced a grounded yet expansive energy, aligning practitioners with the flow of prosperity and opportunity. Master Abundantia, the Roman goddess of abundance, guided this system, ensuring that abundance was

not only seen as financial prosperity but as a state of being. The energy worked on dissolving scarcity-based mindsets, replacing them with an awareness of limitless potential. Practitioners found that it helped them recognize and receive the abundance already present in their lives while also opening them up to new opportunities. Whether it was in the form of financial success, career growth, or deep personal fulfillment, this technique reminded practitioners that abundance is always available for those who are open to it.



Clover Path of Luck Technique followed, bringing an element of surprise and serendipity. Lady Nada gifted this system, surrounding the practitioner with an ethereal four-leaf clover infused with divine energy. The symbolism of the clover has long been associated with fortune, prosperity, and unexpected blessings. This system worked as a fast-acting manifestation tool, allowing practitioners to call upon luck in both

major and minor aspects of life. Whether used for career advancements, personal breakthroughs, or simply for an extra touch of good fortune in daily life, the energy carried a sense of excitement and possibility. Some practitioners reported small but meaningful shifts in their experiences, while others found themselves unexpectedly guided toward favorable opportunities. It was an energy of openness, encouraging practitioners to embrace the unknown with trust and optimism.



As the month moved forward, loliite Essence deepened the journey into intuition and insight. Loliite has long been associated with vision and spiritual awareness, making it an ideal tool for those seeking clarity. The essence worked to enhance the third eye chakra, allowing practitioners to see beyond the physical world and into the realm of higher guidance. Unlike other intuitive systems that worked with rapid downloads of information, this energy encouraged a steady,

grounded approach to wisdom. Some practitioners found that it helped clear mental fog, making decision-making easier, while others used it as a tool for dream work and meditation. It was a reminder that true insight comes not from seeking, but from allowing wisdom to unfold naturally.

Dove's Wreath Technique introduced a profound energy of peace and stillness. Connected to Goddess Eirene, this system embodied the true essence of harmony and inner balance. Unlike some energies that worked through transformation and intensity, this one was gentle, reminding practitioners that peace is a state that can be cultivated, even in the midst of chaos. The dove has long been a symbol of tranquility, carrying with it the promise of hope, love, and divine presence. Some who worked with this energy found themselves experiencing a greater sense of calm, even in difficult situations, while others described it as a space of deep emotional healing. It was not about pushing forward or seeking more—it was about finding wholeness in the present moment.

The month concluded with Nuummite Wisdom Technique, an energy of deep grounding and ancient knowledge. Nuummite, often called the "Sorcerer's Stone," is one of the oldest minerals on Earth, holding within it the wisdom of time itself. This technique was not about superficial knowledge but about deep, lasting insight. It encouraged practitioners to embrace both spiritual

awareness and earthly wisdom, creating a balance between the seen and unseen. Unlike energies that worked through expansion, this system worked through depth, pulling practitioners inward toward their own inner knowing. Some found that it helped them navigate personal growth with more confidence, while others experienced it as a force of stability during uncertain times. It was an energy of resilience, reminding practitioners that wisdom is not something to be chased but something to be uncovered within.



September carried a rhythm of movement, shifting between the celestial, the emotional, and the deeply grounded. Aurora Borealis Reiki and Sodalite Essence encouraged higher awareness and authentic communication, while Mermaid Song Technique and Abundance Alignment Technique worked with emotional flow and prosperity. Clover Path of Luck Technique and Iolite Essence brought clarity and opportunity, while Dove's

Wreath Technique and Nuummite Wisdom Technique reinforced peace and deep inner knowing. The month was a dance between lightness and depth, encouraging practitioners to embrace both fortune and wisdom in equal measure.

October 2024: Balance, Renewal, and Spiritual Expansion



October carried an energy of transformation, where deep emotional healing met vibrant spiritual renewal. The systems introduced this month blended grounding energies with celestial expansion, guiding practitioners through cycles of release, growth, and manifestation. Each technique and essence worked to refine energy, offering support for communication, personal power, and emotional clarity.

The month began with Sugilite Essence, an energy focused on emotional healing and self-love. Sugilite has long been regarded as a stone of deep spiritual connection, offering protection from negativity while encouraging compassion. This

essence worked to dissolve old emotional wounds, creating space for self-acceptance and inner peace. It provided a shield against harmful energies, reinforcing a sense of security in both spiritual and emotional journeys. As an aid to meditation and spiritual practice, it helped open the third eye and crown chakras, enhancing intuition and higher wisdom.

Fruits of Life Reiki followed, carrying an energy of joy and vitality. This system, gifted by Dionysus, encouraged practitioners to embrace life fully, heightening awareness of pleasure, creativity, and passion. The energy worked to dissolve stagnation, replacing feelings of exhaustion or disconnection with enthusiasm. It was a reminder that joy is a fundamental part of existence, available in both grand and simple moments. In times of uncertainty or challenge, this technique encouraged a return to the present, awakening the senses and reconnecting with life's richness.

Electric Blue Reiki introduced an energy of fast transformation. Connected to the planet Uranus, this system worked like a bolt of lightning, bringing sudden clarity and rapid change. It was particularly useful for moments of stagnation, helping to clear blockages and initiate movement. The energy of Uranus is known for unpredictability and innovation, making this system valuable for those seeking new directions or bold decisions. It was not

about slow, gradual shifts but about breaking through limitations and stepping into something new with confidence.



Alongside this transformative energy, Opalite Essence provided balance and harmony. Opalite has long been associated with communication, particularly in expressing emotions with honesty and clarity. This essence worked with the throat chakra, allowing practitioners to articulate their thoughts and feelings without fear or hesitation. It carried a gentle yet uplifting vibration, promoting optimism, self-worth, and emotional stability. In moments of uncertainty, it provided reassurance, helping to maintain a sense of calm even in fluctuating circumstances.

Larimar Essence followed, reinforcing the theme of communication with a soothing and introspective energy. Connected to the lost wisdom of Atlantis, Larimar carried a deep spiritual resonance, opening pathways to higher understanding. This essence

encouraged emotional release, helping practitioners let go of past burdens and embrace a more peaceful state of being. Its connection to water made it a fluid and gentle energy, one that worked to dissolve stress and promote relaxation. With a focus on the throat chakra, it further supported truthful expression, allowing for both clear speech and deep listening.



Bronze Reiki brought a grounding force to the month's energy, reinforcing stability and resilience. Bronze has long been associated with strength, endurance, and protection, and this system worked to bring those qualities into both the physical and energetic body. It carried a connection to the Earth while also channeling the warmth of the Sun, creating a balanced energy that provided both grounding and empowerment. Practitioners working with this system found themselves feeling more centered, capable of standing strong in their convictions while remaining open to spiritual guidance.

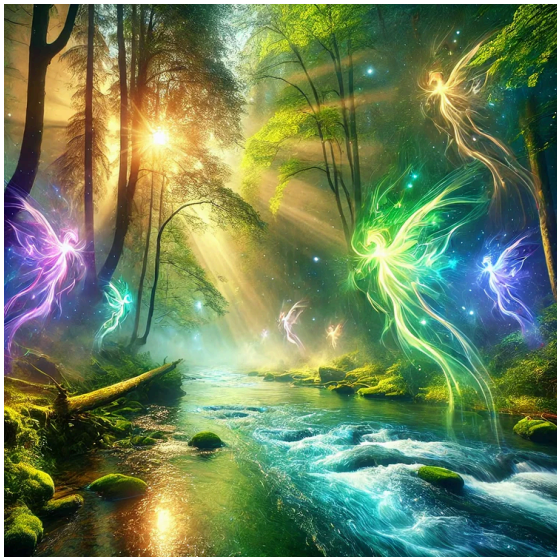
The month concluded with Snowflake Technique, a system that worked with the energy of divine abundance. Inspired by the Slavic goddess Morana, this technique embodied the concept of growth through accumulation, much like how snowflakes gradually form a soft, protective layer over the earth. The energy of this system was gentle yet powerful, encouraging practitioners to cultivate abundance in a steady, nurturing way. It was a reminder that even the smallest steps toward a goal contribute to something greater, and that patience is often a key element in manifestation.



October carried a rhythm of expansion and balance. Sugilite Essence and Fruits of Life Reiki worked on emotional release and joy, Electric Blue Reiki and Opalite Essence provided momentum and communication, Larimar Essence and Bronze Reiki reinforced stability and strength, while Snowflake Technique brought abundance and steady growth. It was a month of deep introspection,

transformation, and a renewed sense of connection to both personal and spiritual truth.

November 2024: Ancestral Healing, Renewal, and Prophecy



November carried a sense of closure, reflection, and renewal. The energies introduced this month focused on breaking free from past limitations, embracing new opportunities, and aligning with divine wisdom. The techniques and systems offered a mix of ancestral healing, fortune alignment, and intuitive expansion, allowing for a deeper connection to both past and future.

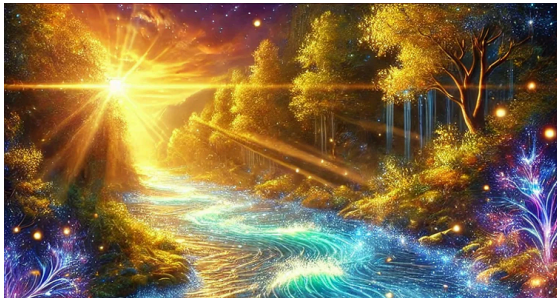
The month began with Circle of Life Technique, a practice centered on ancestral patterns and karmic ties. This system, connected to Saturn's energy, worked to dissolve unhelpful behavioral models that had persisted across generations. Rather than severing family bonds, it was about

releasing inherited fears, limitations, and outdated structures that no longer served the highest good. By working with this technique, practitioners had the opportunity to step into their authentic selves, honoring their lineage while also paving the way for future generations to break free from restrictive cycles. Saturn's influence ensured that this process was both disciplined and transformative, bringing awareness to the power of time and responsibility in personal evolution.

Spirits of Svartån followed, bringing an essence of connection to Sweden's rich natural and spiritual heritage. The river Svartån, known as "The Black River," has long been a source of inspiration and life, flowing through towns and forests, carrying with it stories of history and mystery. This system integrated the energy of the rune Gebo, a symbol of balance, generosity, and interconnectedness. By working with this technique, practitioners engaged with the wisdom of nature and the unseen forces that have long been associated with the river's presence. The energy of Svartån encouraged reflection, reminding practitioners that true prosperity flows like water—moving naturally through cycles of giving and receiving, rather than being held onto or forced.

Disconnecting Past Technique introduced an energy of release and renewal, inspired by the purification power of Goddess Ganga. Just as the sacred river Ganges has been revered

for its ability to cleanse both the body and soul, this system worked on an energetic level to wash away past burdens. It encouraged practitioners to let go of emotional attachments, unresolved conflicts, and patterns that no longer aligned with their growth. The technique involved visualization, allowing the energy to flow like a river, carrying away stagnation and making space for new beginnings. This was not about forgetting or erasing the past but about integrating its lessons and stepping forward unburdened.



Lakshmi's Fortune Technique followed, bringing an energy of abundance and divine prosperity. Rooted in the wisdom of Goddess Lakshmi, this system worked on multiple levels—material wealth, emotional fulfillment, and spiritual growth. Lakshmi's teachings emphasized that true prosperity is not just about financial gain but about living a life that is rich in purpose, gratitude, and harmony. The energy encouraged practitioners to align their actions with generosity, integrity, and balance, ensuring that abundance was both received and shared. By working with this system, one could cultivate an environment where opportunities flowed naturally, where wealth was not

just about accumulation but about creating a meaningful and fulfilling life.

The month concluded with Apollo's Prophecy Healing Technique, an intuitive system connected to the Greek god Apollo. Known for his domains of light, healing, and prophecy, Apollo was often associated with divine insight and the power of truth. This technique worked specifically with distant healing, enhancing the ability to sense and scan energy fields. It was a practice of refinement, allowing practitioners to develop their intuitive gifts while maintaining a grounded and ethical approach to energy work. Apollo's presence encouraged clarity, wisdom, and an understanding that true insight comes from both intuition and knowledge. This system was particularly useful for those looking to deepen their connection to higher guidance, making it a powerful way to close the month.

November carried a rhythm of letting go, embracing wisdom, and stepping into prosperity. Circle of Life Technique and Disconnecting Past Technique worked on releasing old structures, while Spirits of Svartån and Lakshmi's Fortune Technique encouraged a flow of abundance and connection. Apollo's Prophecy Healing Technique added an element of divine insight, rounding out the month with clarity and expansion. It was a time of preparing for the future by clearing the past, ensuring that the path ahead was open and aligned with personal truth.

December 2024: Reflection, Renewal, and Inner Balance



December arrived with a sense of stillness and reflection, a time to look inward before stepping into the new year. The systems introduced this month carried an energy of peace, abundance, and harmony. They provided a balance between grounding energies and higher vibrational frequencies, offering support in maintaining emotional stability, rekindling passion, and embracing the miracles of life.

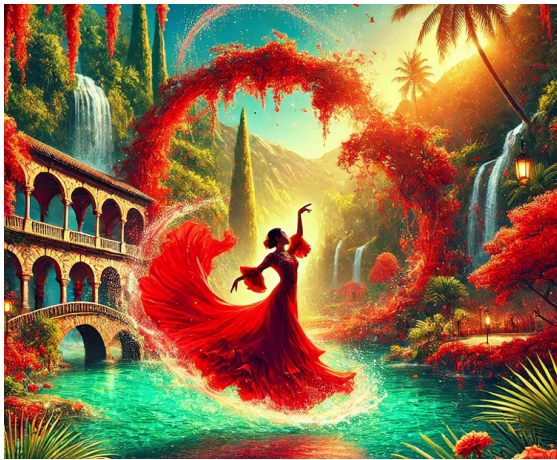
The month opened with White Agate Essence, a system centered on tranquility and emotional clarity. White agate has long been associated with protection, balance, and mental clarity. Known as the “Stone of Tranquility,” it helped in soothing the mind and

releasing emotional burdens. This essence supported emotional healing, allowing practitioners to let go of lingering worries and step into a space of inner peace. It provided grounding, helping to stabilize overwhelming emotions, and encouraged open and honest communication. This was an energy of gentle strength, reinforcing stability during times of transition and uncertainty.

Mediterranean Oasis Passion Technique followed, bringing warmth and vibrancy. Inspired by the passionate energy of Mediterranean cultures, this technique carried the essence of life’s zest and love for the moment. Mediterranean traditions are rich in music, dance, and celebration, and this system sought to awaken that same energy within. It was designed to reignite passion, whether in personal relationships, creative endeavors, or simply in daily life. When motivation or enthusiasm faded, this technique served as a reminder to embrace joy and seek fulfillment in both small and significant moments. Connected to the lower chakras, it worked with the energy of movement, encouraging confidence, creativity, and spontaneity.

St. Nicholas’ Miracles Technique introduced a deep sense of generosity and divine blessings. St. Nicholas, the historical figure who inspired modern-day Santa Claus, was known for his selfless giving and acts of kindness. This system worked with the energy of miracles, focusing on both material and spiritual abundance. It

encouraged practitioners to reflect on their desires—not just material wishes, but also aspirations for personal growth, love, and kindness. The energy carried an essence of gratitude and faith, reinforcing the idea that miracles often come in unexpected ways. It was an invitation to align with the season’s spirit of giving, reminding practitioners that true prosperity flows not only through receiving but also through sharing with others.



Chrysocolla Essence introduced a harmonious energy of communication and self-expression. Chrysocolla, a vibrant blue-green mineral, has long been valued for its ability to promote honest dialogue and emotional balance. This system worked particularly with the throat and heart chakras, supporting the ability to speak from a place of truth and compassion. The energy helped dissolve tension and encouraged clear, thoughtful communication. In times of uncertainty, it served as a tool to align thoughts and emotions, allowing practitioners to express themselves with confidence and sincerity. The

connection between the throat and heart chakras reinforced the idea that true expression comes from a place of authenticity and love.

Equilibrium Reiki concluded the year with a deep sense of balance and stability. This system combined the energy of Herkimer diamonds with Reiki, creating a powerful yet gentle force of alignment. Just as the name suggests, this system worked to bring equilibrium, ensuring that both physical and energetic bodies remained in harmony. It helped practitioners release blockages, clear emotional stagnation, and restore their natural state of peace. Unlike energies that focus on rapid transformation, Equilibrium Reiki emphasized a steady, flowing alignment, much like a river that gently smooths out the stones in its path. It was a reminder that balance is not about rigid control but about allowing energy to move freely while maintaining a strong and grounded center.

December carried an energy of reflection and renewal. White Agate Essence and Equilibrium Reiki provided stability and grounding, while Mediterranean Oasis Passion Technique reignited enthusiasm and joy. St. Nicholas’ Miracles Technique introduced themes of gratitude and blessings, while Chrysocolla Essence encouraged honest communication. It was a month of preparing for the next cycle, embracing the lessons of the past year while stepping into the new with clarity and purpose.

Looking Back, Moving Forward

As we reach the end of this first volume of **Gabrielsen Academy Zine**, it's time to pause, reflect, and look ahead. This collection of energy systems and techniques has woven together a journey of healing, transformation, and expansion. Each month brought new opportunities to explore different frequencies, from the grounding presence of protection and stability to the vast, limitless energies of higher consciousness and manifestation. Throughout the year, the rhythm of energetic work became clear—there were times of intensity, moments of stillness, and spaces in between where growth settled in quietly.

One of the most important aspects of energy work is integration. It is not enough to move from one system to the next without allowing the shifts to take root. Growth happens not only in the moment of attunement or activation but in the days, weeks, and months that follow. The energies introduced this year worked in harmony, some bringing immediate clarity and transformation, others unfolding over time, gently guiding practitioners through deeper levels of awareness. This process of integration is what truly shapes our path. The work does not end when the system is received—it begins.

Another recurring theme throughout this collection has been **balance**. Spiritual work is often thought of as something separate from daily life, something to be engaged with in meditation, rituals, or dedicated practices. But the reality is that energy flows through every moment. The systems explored this year touched on prosperity, relationships, personal empowerment, and healing—all aspects of life that extend beyond structured practice. Learning to carry these energies into daily experiences is what makes them powerful. Reiki, attunements, and techniques are tools, but they are not meant to replace intuition and lived experience. They are here to **enhance awareness**, to remind us of the connection between the physical and the energetic, and to help us navigate life with a deeper sense of purpose.

Looking back at the systems introduced in 2024, it is clear that the journey was not random—it followed an unfolding pattern. Early in the year, the focus was on **foundation and protection**, ensuring that energy was stabilized before moving into deeper transformation. Mid-year, the energy shifted toward **expansion**, inviting abundance, creativity, and self-discovery. As the year progressed, the focus returned to **healing and alignment**, reinforcing inner strength and preparing for what comes next. These cycles reflect the natural flow of personal growth—building, expanding, realigning, and beginning again.

What lies ahead remains unknown, but that is part of the journey. This magazine has been an experiment, a way to document and explore the unfolding energies of the year. Whether this will continue as a monthly, bi-monthly, quarterly, or yearly release is something that will reveal itself in time. For now, this first volume stands as a record of transformation—a way to reflect on what has been introduced, how it has shaped the journey, and where it may lead next.

There is no right or wrong way to move forward from here. Some may choose to revisit certain systems, working with them more deeply. Others may feel called to explore new directions. The

beauty of energy work is that it is personal, ever-changing, and unique to each individual. What remains constant is the commitment to growth, the willingness to embrace transformation, and the openness to what comes next.

Thank you for being part of this journey. Whether this is the first time you have engaged with these energies or you have been walking this path for years, your presence in this space matters. There is no destination, only the ongoing process of learning, evolving, and discovering new ways to connect. This magazine is not an ending but a marker along the path—one that acknowledges what has been and leaves space for what is yet to come.

List Monthly Energy Systems - 2024

January 2024

Gold Reiki Ultimate - 29 December 2023
Consciousness Reiki Platinum - 7 January
Waterfall Breath Technique - 15 January

February 2024

Golden Transformation & Healing Platinum - 12 February
Shiva's Oneness Technique - 19 February
Rainbow Water Spa System - 21 February

March 2024

Azurite Reiki Platinum - 6 March
Morganite Reiki Platinum - 14 March
Guardian Angel Reiki - 21 March
Spring Rebirth Technique - 24 March
Phoenix Reiki - 29 March

April 2024

Soulmate Reiki - 5 April
Ocean Wave Reiki - 14 April
Thunder Wheel Technique - 18 April
Spring Flowers Technique - 21 April
Pink Rhapsody Technique - 23 April
Pink Abundance from Abundantia - 25 April
Turquoise Rain Technique - 26 April
Velvet Pearls Technique - 28 April

May 2024

Cloud Rings Technique - 4 May
Red Booster Technique - 8 May
Ethereal Pink Water Lily Technique - 10 May
Nordic Flame Technique - 16 May
8 Norse Gods & Goddesses Platinum - 20 May
Nature Reiki Platinum - 27 May
Emerald Reiki Platinum - 28 May

Magenta Laser Technique - 28 May

Green Reiki Platinum - 29 May

June 2024

Royal Blue Success Technique - 2 June

Ancient Wisdom Technique - 4 June

Spiritual Journal Platinum - 7 June

Golden Topaz Essence - 13 June

Aquamarine Essence - 19 June

Heaven Cloud Technique - 22 June

Hearts of Gold Technique - 24 June

Gardens of Life Technique - 26 June

July 2024

Recovery Elixir from Archangel Raphael - 1 July

Strawberry Quartz Essence Technique - 1 July

Stardust Path from Mercury Technique - 2 July

Galaxy Vortex of Manifestation from Master Abundantia - 4 July

Kunzite Essence - 14 July

Business Reiki - 14 July

Swift Diamond Reiki - 27 July

Lapis Lazuli Essence - 29 July

Swift Celestine Reiki - 31 July

August 2024

Green Aventurine Essence - 2 August

Rebirth Reiki - 7 August

Copernicus Reiki - 9 August

Seraphim Reiki - 21 August

September 2024

Aurora Borealis Reiki - 9 September

Sodalite Essence - 10 September

Mermaid Song Technique - 13 September

Abundance Alignment Technique - 17 September

Clover Path of Luck Technique - 19 September

Iolite Essence - 22 September

Dove's Wreath Technique - 25 September

Nummrite Wisdom Technique - 27 September

October 2024

Sugilite Essence - 1 October
Fruits of Life Reiki - 2 October
Electric Blue Reiki - 3 October
Opalite Essence - 3 October
Larimar Essence - 7 October
Bronze Reiki - 12 October
Snowflake Technique - 15 October

November 2024

Circle of Life Technique - 6 November
Spirits of Svartån - 12 November
Disconnecting Past Technique - 22 November
Lakshmi's Fortune Technique - 23 November
Apollo's Prophecy Healing Technique - 26 November

December 2024

White Agate Essence - 4 December
Mediterranean Oasis Passion Technique - 9 December
St. Nicholas' Miracles Technique - 13 December
Chrysocolla Essence - 18 December
Equilibrium Reiki - 19 December